



EN 12084 AL
2017

H2502

© KRONE




HZ902









 **KRONE**
Mega Liner







WIKESCHWABER SYSTEME

PLATE	NO.	DATE	TESTED BY	TESTED
1				
2				
3				
4				
5				
6				
7				
8				
9				
10				

WARNING
The equipment level of the brake equipment on the tractor vehicle depends on the manufacturer and type. The coupling force controllers of the tractor vehicle in relation to the trailer vehicle braking and the control system limits differ.
It is therefore sensible to observe the braking behaviour of the vehicle train and to adjust it if necessary.

ATTENTION
The equipment level of the brake equipment on the tractor vehicle depends on the manufacturer and type. The coupling force controllers of the tractor vehicle in relation to the trailer vehicle braking and the control system limits differ.
It is therefore sensible to observe the braking behaviour of the vehicle train and to adjust it if necessary.

KRONE



NOTE!

The equipment of the braking system on the trailer vehicle corresponds to the latest state of the art.

The equipment level of the brake equipment on the tractor vehicle depends on the manufacturer and type. The coupling force controllers of the tractor vehicle in relation to the trailer vehicle braking and the control system limits differ.
It is therefore sensible to observe the braking behaviour of the vehicle train and to adjust it if necessary.

515074043

KRONE







ATTENTION
ANGLES MORTS

 KRONE



















Continental

WTT3

SAF

SHORAB

SH



Continental

Continental

SAF



 **KRONE**



KRONE



JOST
KROHNE
KROHNE

KROHNE





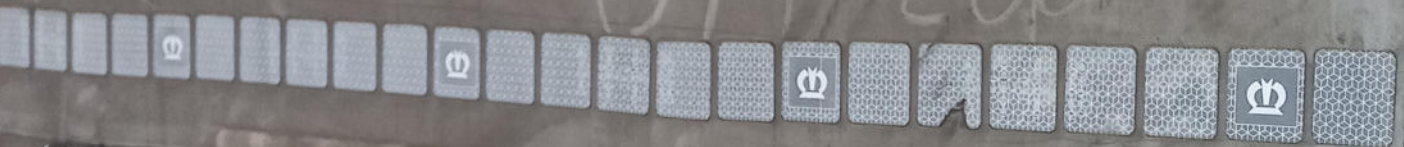


FERRI PLAST

AVVERTENZE

28

37 200



 **KRONE**









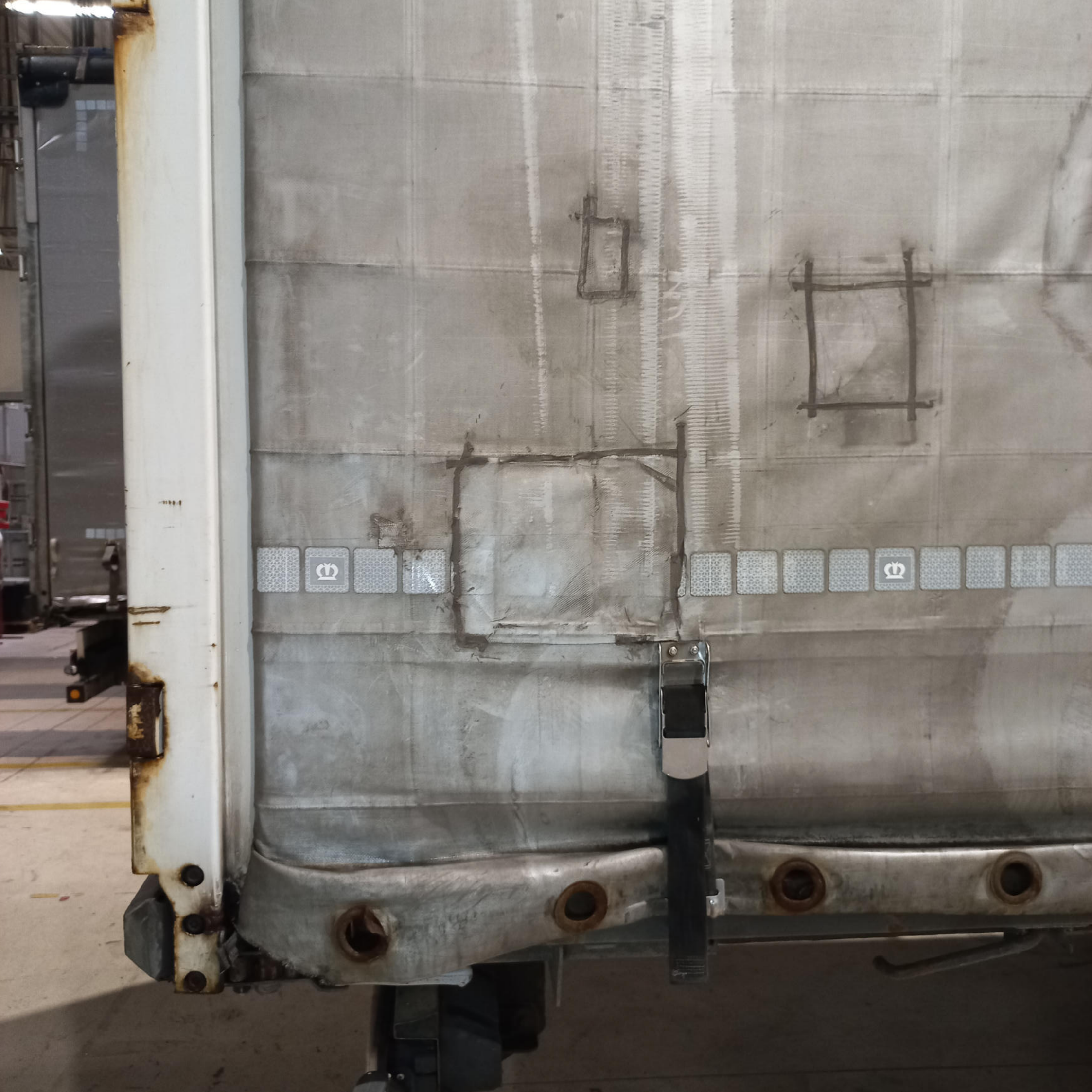


















Continental HT3

REMOVABLE
RETRADING (50)
385/55 R19.5
M+S

SAF

19.5x17.5

17.03

MADE IN GERMANY



385/55 R19.5

6154474096

Continental

SAF

7100

19.5 R175

1000000





 **KRONE**

CD KRONE

A close-up photograph of a white metal beam, likely part of a machine. The beam has a blue logo consisting of a stylized 'K' symbol followed by the word 'KROONE' in a bold, sans-serif font. The beam shows signs of wear, including a dent and some surface marks. In the background, there are dark metal components and a light-colored floor.

K KROONE





LS950
1978-1980
11
25
SAFARI



 KRONE

JOSEF
1057



 **KRONE**
Mega Liner



ECO
80

I LOVE JESUS

ATTENTION

ANGLES MORTS

LT HZ 902

LT  **KRONE**



KRONE

S 80

I LOVE JESUS

LT KRONE

HZ 902













LT
LITHUANIA







I LOVE JESU

LT KRONE







S 80



LT









LT  KRONE













